



1131 Airport Rd, Bismarck, ND

Phone: (701) 471-1783 | Fax: (701) 223-7083

SPECIFICATION SHEET

Project: 1200 sqft Bi-Level

1200 sqft Bi-level with unfinished basement, 816 sq ft 3 car garage

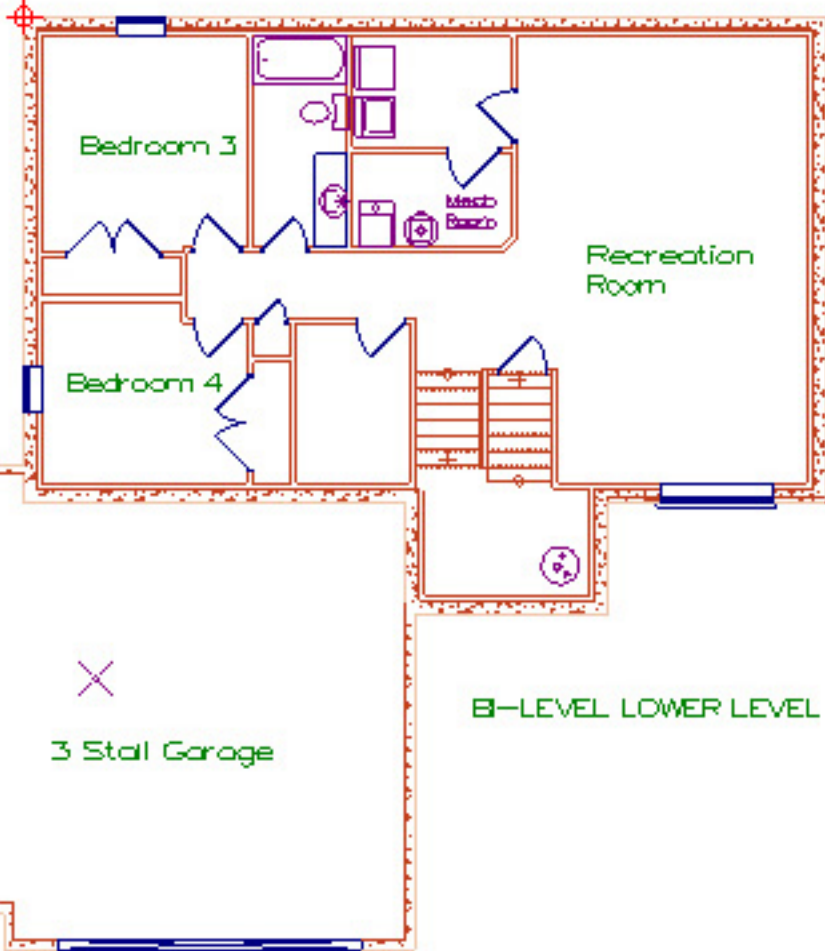
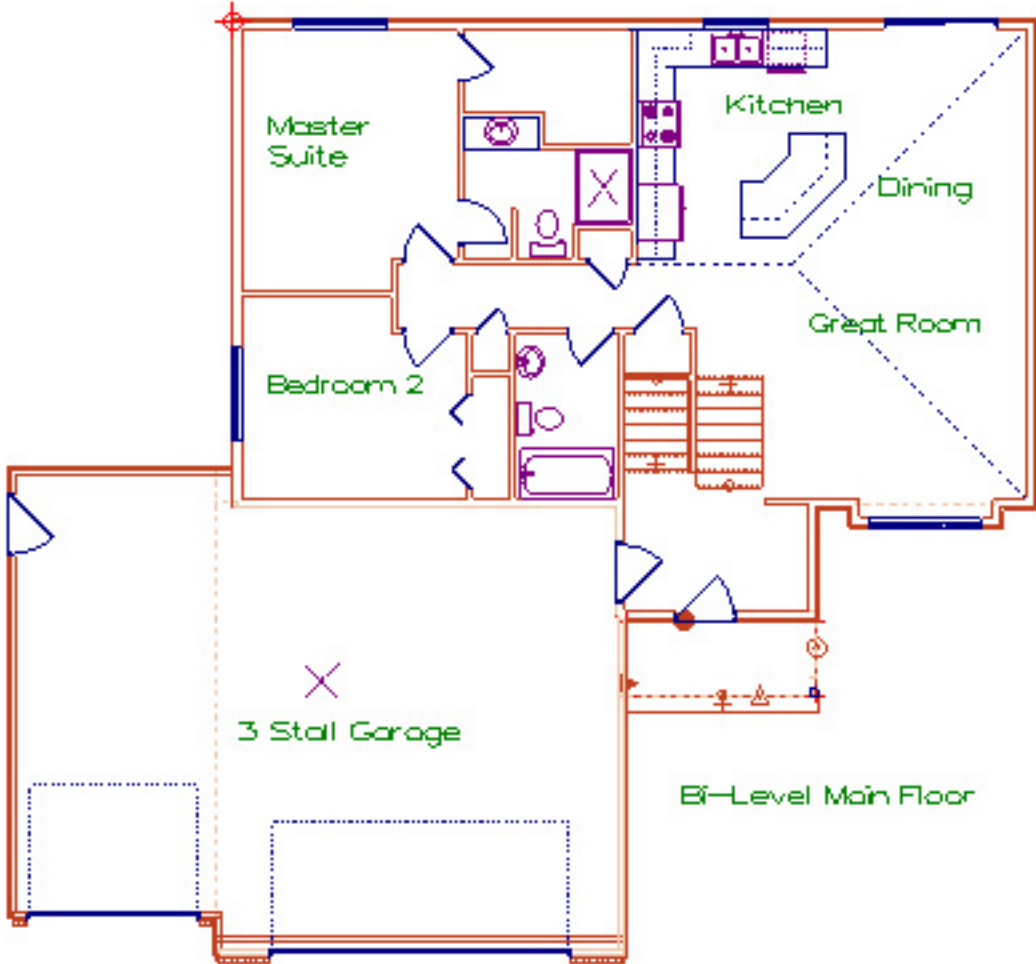
Includes:

- Concrete basement
- 2x6 exterior frame with R-19 fiberglass insulation
- 2x4 interior frame, 2x4 garage frame
- 8' tall main level
- Un-insulated garage doors with one opener
- Concrete front stoop
- 1 garage floor drain
- Vinylite windows
- 30 yr certainteed shingles
- D4 lap siding. .44 mil vinyl
- Steel soffit & Fascia
- R-40 blown insulation in attic
- Vault in Living Room
- orange peel on walls and ceilings, Chamfered drywall corners
- Sheet rock return on all window openings
- Knotty Alder base and casing
- Painted 6 panel doors
- Knotty alder cabinets
- Brushed nickel door knobs and hinges
- \$3.75 per square foot flooring allowance
- Electric oven
- 40gal gas water heater
- Chrome plumbing fixture package,
- Furnace (gas 92% efficient)
- Standard Elec Layout
- \$2,200.00 Appliance allowance
- \$1,000.00 light fixture allowance



FRONT ELEVATION

MAIN FLOOR



BASEMENT